

# PEWTER LIVE

## 2009

# Contents

**Introduction 4**

**Sponsors 5**

**Master and Company 7**

**Judges 9**

**Shop at Pewter Live 11**

**The Open Competition 13**

**Universities 25**

**Student Competition: Decorative Arts 26**

**Architecture 34**

**Fashion 38**

**Association of British Pewter Craftsmen 49**

**Past Winners 51**

**Statement of Design Rights 53**



Medals for Excellence  
*Call for nominations 2009*

Do you know someone who  
deserves to be in the spotlight?  
You could put them there by  
nominating them for a Medal  
for Excellence.

[www.cityandguilds.com/m4x](http://www.cityandguilds.com/m4x)

# PEWTER LIVE 2009

## Introduction

For more than 600 years The Worshipful Company of Pewterers has actively supported and promoted the pewter trade. The trade has changed enormously in that time but we are now in a renaissance for the material and Pewter Live is its showcase. The competition is now in its 25th year and flourishing as an opportunity for new designers to display their work in the City of London.

There are two competitions: the Student and the Open. The Student competition has three categories each with a brief: Decorative Arts, Fashion - the Total Look and Architectural Fixtures and Fittings. Twelve Universities with over 70 students are taking part this year. The Open competition has attracted a huge amount of interest with 63 entering the preliminary round of which 23 have gone forward to the final. The brief for the Open focuses on Innovation and Design. We are looking for something that will give a strong corporate image while at the same time being attractive, innovative and eye catching.

Pewter Live is all about encouraging innovation in design in order to exploit pewter to its fullest potential and to produce ideas which will stretch the boundaries of this marvellous metal. We wanted the entrants to bring pewter 'alive'; to demonstrate an understanding of its inherent qualities and contemporary appeal to consumers of all ages and tastes.

The Pewter Live Committee works closely with the Association of British Pewter Craftsmen and its members to achieve a high standard that will inspire designers and manufacturers to produce the very best of British pewter.



HOPEMAN  
ASSOCIATES Ltd.

richmond  
creative event catering

City &  
Guilds

CADMAN  
FINE WINES

# Sponsors

## THE WORSHIPFUL COMPANY OF PEWTERERS WOULD LIKE TO THANK

Cadman Fine Wines - [www.cadmanfinewines.co.uk](http://www.cadmanfinewines.co.uk)

CF Day Ltd. - Property Management Consultants

City and Guilds - [www.cityandguilds.com](http://www.cityandguilds.com)

Conran & Partners - [www.conranandpartners.com](http://www.conranandpartners.com)

Esmee Fairbairn - [www.esmeefairbairn.org.uk](http://www.esmeefairbairn.org.uk)

Giftware Association - [www.ga-uk.org](http://www.ga-uk.org)

Hopeman Associates

NAG - the National Association of Goldsmiths - [www.jewellers-online.org](http://www.jewellers-online.org)

Neish Trust

Procom Audio Visual Suppliers - [www.procom.uk.com](http://www.procom.uk.com)

Rathbones - [www.rathbones.com](http://www.rathbones.com)

Richmond Creative Event Catering - [www.richmondcaterers.com](http://www.richmondcaterers.com)

Speechly Bircham - [www.speechlys.com](http://www.speechlys.com)

Splash Printing - [www.splashprinting.co.uk](http://www.splashprinting.co.uk)

Teamwork European Services - [www.teamworkexhibitions.co.uk](http://www.teamworkexhibitions.co.uk)

The Worshipful Company of Loriners - [www.loriner.co.uk](http://www.loriner.co.uk)

Wildshaw Ltd.





SpeechlyBircham



# PEWTER LIVE 2009

Passionate about fine wine.

## Promotions



CADMAN  
FINE WINES

[www.cadmanfinewines.co.uk](http://www.cadmanfinewines.co.uk)

To order:

Telephone 0845 121 4011 Fax 0845 121 4014

[www.cadmanfinewines.co.uk](http://www.cadmanfinewines.co.uk) email: [sales@cadmanfinewines.co.uk](mailto:sales@cadmanfinewines.co.uk)

# SPOT THE DIFFERENCE



How can you spot a jeweller you can trust? N.A.G. jewellers are...

**QUALIFIED** **PROFESSIONAL**  
**INFORMED** **EDUCATED** **REPUTABLE** **FAIR**  
**RELIABLE** **SUPPORTED**  
...Look out for the N.A.G. Grant of Arms



# PEWTER LIVE 2009



## Master and

Welcome to Pewter Live, The Worshipful Company of Pewterers annual design competition and exhibition.

What started, 25 years ago, as a student design competition has now blossomed into the nation's premier showcase for modern pewter design, attracting not only students, but established designers too.

The Pewterers' Company has been involved with pewter since the Middle Ages. Members of our craft produced the fine pewterware that graced Royal tables at Hampton Court and domestic items of every description. Later, they produced a fascinating range of decorative items in every style - from Art Deco to the latest contemporary design.



Pewter is a most versatile metal, which combines both warmth and lustre. It is the ideal material for sophisticated presents of quality.

We are delighted that you can join us as we celebrate the enduring beauty of pewter and the best of modern design.

**Christopher Arden Peacock FRICS**  
**Master of The Worshipful Company of Pewterers**



# Company

The Pewterers' Company is an ancient and continually evolving foundation with medieval origins as a City Guild. The earliest documented reference to it is in the records of the Corporation dated 1348 and the Company's own records are extant from 1451. The first charter was granted by King Edward IV in 1473. It is number sixteen in the order of civic precedence among over a hundred livery companies.



The history of the Company reflects that of the use of pewter. The first reference to 'the makers of vessels of pewter' is dated 1348 when they asked the Mayor and Corporation for approval of articles drawn up for trade governance. It was much later that Edward IV granted the first charter in 1473/4. This gave the Company the right to be self-governing, to hold goods and property in perpetuity and to govern the trade throughout the kingdom. This last is unlike the powers granted to the majority of other companies whose jurisdiction was limited to the City and its environs. Arms were granted to the Company at the same time.

Groups of tradesmen naturally congregate to discuss matters of mutual interest. Since in feudal times any gathering was considered suspect by the authorities, companies usually had a religious affiliation. Ours was to the Virgin Mary, and her symbol, a lily pot, appeared in our original arms. This was changed in 1533, during the Reformation, when the one in present use was granted.



The Company was concerned with trade matters, costs, prices, raw materials, quality of pewterware and training of apprentices, as well as relief to the poor within the trade, funeral expenses, general charity and civic duties. The Company continues to support the trade, charities and the City as well as meeting together in Pewterers' Hall.

The first Hall, completed in 1496, was destroyed in the Great Fire. The second Hall, on the same site in Lime Street, was demolished in 1932, although from the mid 19th century the premises were let to a firm of hatters. We do however still own the site. The present Hall was opened, on a new site, in 1961.

*Last years Lord Mayor of London, Alderman David Lewis with Company member Richard Mullens looking at a piece just made in the Pewtersmithing Marquee 2008.*



# PEWTER LIVE 2009



The Pewterers' Company is delighted to Welcome Jane Rapley OBE as the VIP guest and Presenter of Prizes for Pewter Live 2009. **Guest of Honour**

**JANE RAPLEY OBE. MA RCA FRSA ACSD** has been a senior academic at the Central School of Art & Design and subsequently Central Saint Martins College of Art & Design (CSM) since 1987, leading the School of Fashion & Textile Design (including jewellery) as its Dean for seventeen years. She took over as Head of the whole College in January 2006. She is now leading the relocation of the College from its several sites in central London to a unified £160m campus which will provide 'state of the art' accommodation for teaching and research and will form the centrepiece of the King's Cross Regeneration Project.

She was awarded an OBE for services to Higher Education in 2001.



**SEBASTIAN CONRAN** was born in London in 1956. After gaining Maths, Physics & Chemistry 'A' levels at school, he studied Industrial Design Engineering at the Central College of Art & Design where he was treasurer of the Student Union and student representative on the Governing Council and gave the Sex Pistols their first-ever booking. Subsequently he worked with the Clash, designing record sleeves, promotional material, posters, T shirts and other clothing. Sebastian started his own design business in 1986, 'Sebastian Conran Associates' (SCA), a product and brand development consultancy that worked with a variety of international businesses to develop healthcare and

## Judges

consumer goods, industrial design, and luxury goods. In 1992 Sebastian started a separate partnership with designer Tom Dixon. In 1999 SCA studio merged with the Conran Group to form Conran & Partners. Sebastian has written several books, articles and papers on design; he was a founding contributor to Blueprint magazine; he has taught furniture design at the Royal College of Art and lectures frequently as well as judging (and sponsoring) many international design awards such as D&AD, Design Week, Red Dot, and the RSA. An active member of several bodies, he is, amongst others, an Honorary Fellow of the Royal College of Art and Fellow of The Royal Society of Arts.



**ANNABEL FREYBERG** As a child Annabel Freyberg trailed after her mother round countless antique shops and art galleries, and has since found the habit hard to break. She continued to enjoy looking at things while an art student at Kingston Polytechnic and trained her eye further under Min Hogg at The World of Interiors in the early 1990s. At the Independent, she was deputy Obituaries editor (1995-99), and set up and co-edited the paper's weekly design pages in her last year there as well as writing a book, Living with Ceramics (Laurence King/Rizzoli). An exciting stint as Arts Editor at the Evening Standard during the museum building boom of the Millennium was followed by another at The World of Interiors, this time under the editorship of Rupert Thomas, before becoming Homes Editor at the Telegraph Magazine until last December. All these posts required seeking out the best new designers, a task which Annabel has found enormously enjoyable and rewarding.





**GEORGINA GODLEY** began her career as a designer and developed into becoming a creative director for international fashion and life-style brands. Having trained as a fine artist at Chelsea School of Art, she was recruited into fashion, and launched two successful labels, CROLLA 1981, and GEORGINA GODLEY 1986. In 1999 she focused on homewares, when she was appointed Style Director and Head of Home Accessories with Tom Dixon at Habitat. In 2004 she was appointed Creative Director at Wedgwood, where she developed their product ranges of ceramics, glass, crystal, metal-ware, jewellery and textiles. She opened new stores and re-positioned the perspective of the brand. Georgina's reputation rests on her innovative use of materials and unerring forecasting of trends in all areas of fashion, dress, product-design and interiors. She now works in a recently established Creative Consultancy of unique power in the world of international fashion and life-style.



**KERRY NICHOLLS** joined John Lewis in 1994. Before moving to the buying office she spent eight years on the selling side and managed departments in various product areas including Silverware. Kerry has been buying silverware, cutlery, frames and clocks for five years, working with a wide supply base using diverse materials across a range of product types. Within the silverware area she finds it exciting working with suppliers to develop traditionally handcrafted products using materials like sterling silver and pewter that reflect current design trends.



**ED GLOVER** with his wife Judy started their pewter company Glover and Smith in 1994. Their award winning designs are manufactured in-house and consist of tableware, jewellery, cupboard handles, giftware and home accessories. Ed also designs for museums and heritage sites. Recent commissions include Highgrove and Glastonbury Abbey.



**LAUREN SIZELAND** is Head of Business Development and Licensing at the Victoria & Albert Museum. Lauren has 15 years experience as a senior brand developer within the established arts and museum sector. In 1988 she was involved in the pioneering development of retailing at the Royal Academy of Arts and was later recruited to develop 'Art Room' - a new concept for retail and mail order. Lauren has also worked as a consultant for the New Millennium Experience Company, BBC Worldwide, British Museum, National Portrait Gallery, RSC and Harrods. She became Head of Retail & Brand Development for NMSI; managing the commercial functions at three UK national museums, achieving marked success with the Science Museum which now has its brand in more than 300 high street stores. As Head of Business Development & Licensing at the Victoria and Albert Museum since 2005, Lauren is responsible for directing the V&A's international licensing programme. The museum holds an extensive collection of pewter, which is especially rich in European pieces. The licensing programme also has long-term partnerships with pewter manufacturers across the globe.

# PEWTER LIVE 2009

## SHOP @

There will be an impressive range of contemporary pewter for sale at Pewter Live 2009. Here is a preview of some of the items which will be on sale.

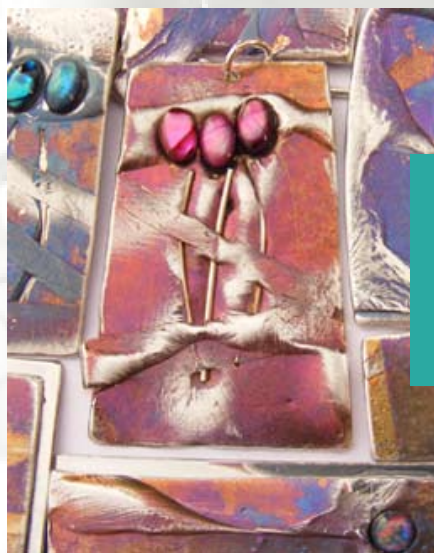


**Fleur Grenier**  
[design@fleurgrenier.co.uk](mailto:design@fleurgrenier.co.uk)  
[www.fleurgrenier.co.uk](http://www.fleurgrenier.co.uk)

**Partners in Pewter**  
[www.partnersinpewter.co.uk](http://www.partnersinpewter.co.uk)



**Roma Vincent**  
[studio@romavincent.co.uk](mailto:studio@romavincent.co.uk)  
[www.romavincent.co.uk](http://www.romavincent.co.uk)





# PEWTER LIVE



Glover and Smith  
[sales@gloverandsmith.com](mailto:sales@gloverandsmith.com)  
[www.gloverandsmith.com](http://www.gloverandsmith.com)



Maria Santos  
[maria.santos@virgin.net](mailto:maria.santos@virgin.net)



Gill Clement  
[gill.clement@btconnect.com](mailto:gill.clement@btconnect.com)

## DEMONSTRATIONS

There will be demonstrations taking place in the marquee. You will have the chance to see Freeman College, [www.rmet.co.uk](http://www.rmet.co.uk), demonstrating Spinning, Turning and Casting.

Adrian Doble and Fleur Grenier will also be giving demonstrations of pewtersmithing.

**Public Opening times 10.30 - 16.30**  
**Wednesday 10 June [www.pewterers.org](http://www.pewterers.org)**



# PEWTER LIVE 2009

## THE OPEN

### Open Category 2009 - Innovation and Design

The brief for 2009 was to design an item for a restaurant table or a bar. Something that will give a strong corporate image whilst at the same time being attractive, innovative and eye catching. It can be anything from the light fittings for a cocktail bar, logo napkin rings for a new restaurant or even an item which could be presented as a corporate award.

With silver items there is the automatic added value of the perception of the material. The costs of the manufacture of the piece, even if made by hand, are negligible when accounted for in the overall price. In past Pewter Live Competitions the items produced have often been one off designs but in order to overcome the 'perceived value' we want to encourage designers to produce an item for the corporate market with the view of it going into production. The possibilities are endless and by exploiting economies of scale, pewter can be as popular and accessible as the chromed items we currently see adorning the corporate market. Get your inspiration from the Art Deco era, minimalist, Bauhaus and give your design the added value that will make it desirable. All entrants have aimed to keep the retail price of the piece under £150.

Pewter is an amazing material which now sits at the cross road between precious and base metal. We have asked entrants to use this boundary to their advantage; the ideal market is that of high end corporate, hotels, restaurants etc.

**PRIZES: First £2,000 Second £1,000 Third £500**

# OPEN COMPETITION



**Emma-Kate Francis**  
[info@ekfrancis.com](mailto:info@ekfrancis.com)

## ZEP VASES

The innovative design of the Zeppelin formed the initial concept. The iconic form is alluring and can lend itself to a variety of interior products from lighting to tableware. I concentrated on vases as these could be used both in the home, or in a restaurant to add striking detail.

**Ella McIntosh**  
[ellamcintosh@hotmail.co.uk](mailto:ellamcintosh@hotmail.co.uk)

## SAUCE POT

'Sauce Pot' is designed to be an accompaniment to the dining experience and sits on the plate as an elegant way of presenting condiments with a dish. The design is sleek and simple which helps in a busy restaurant environment and lends itself to the process of casting for manufacture.



# PEWTER LIVE 2009

**Charis Jones**  
[cjsculptedsteel@btinternet.com](mailto:cjsculptedsteel@btinternet.com)



## **NAPKIN RINGS**

Inspired by the spiral shape of an ammonite fossil, these napkin rings provide an elegant addition to any table, whether at home or in a stylish restaurant. Designs are stamped into the surface of the metal, allowing corporate logos or personal designs to be easily produced.

**Michelle Mason**  
[michelle@michellemason.co.uk](mailto:michelle@michellemason.co.uk)  
[www.michellemason.co.uk](http://www.michellemason.co.uk)

## **PEONY BEAKERS**

The inspiration behind the Peony pewter beakers was to design an elegant drinking vessel in a material other than glass - to add a talking point. Summer flowers inspired the engraving and a second design features the peony seeds. The beakers can also be used decoratively, to hold flowers.





# OPEN COMPETITION

## TABLE MATS AND WINE LIST COVER

This set of bespoke products, designed for a seafood restaurant, includes a Placemat and Coaster, Menu and Wine List covers. Pieces are constructed from reclaimed Brazilian Mahogany and delicately inlaid with Pewter patterns. This design echoes the movement of flowing water and when taken as a theme, strengthens corporate image.

Laura Carnell  
[laura@rara-design.co.uk](mailto:laura@rara-design.co.uk)  
[www.rara-design.co.uk](http://www.rara-design.co.uk)



# PEWTER LIVE 2009

Shelby Fitzpatrick  
shelby.fitzpatrick@clickvision.co.uk  
www.shelbyfitzpatrick.com



## PLACEMAT AND NAPKIN RING INSPIRED BY THE LOGO OF THE NATIONAL TRUST

Placemat and napkin ring inspired by the logo of the National Trust. It is American Walnut inlaid with pewter. The oak twig with its distinctive leaves and acorn, symbolizes the preservation of our natural and man made inheritance and the strength of a people to maintain these for the present and future.

## PLACEMAT AND NAPKIN RING FOR THE SOCIETY OF DESIGNER CRAFTSMEN

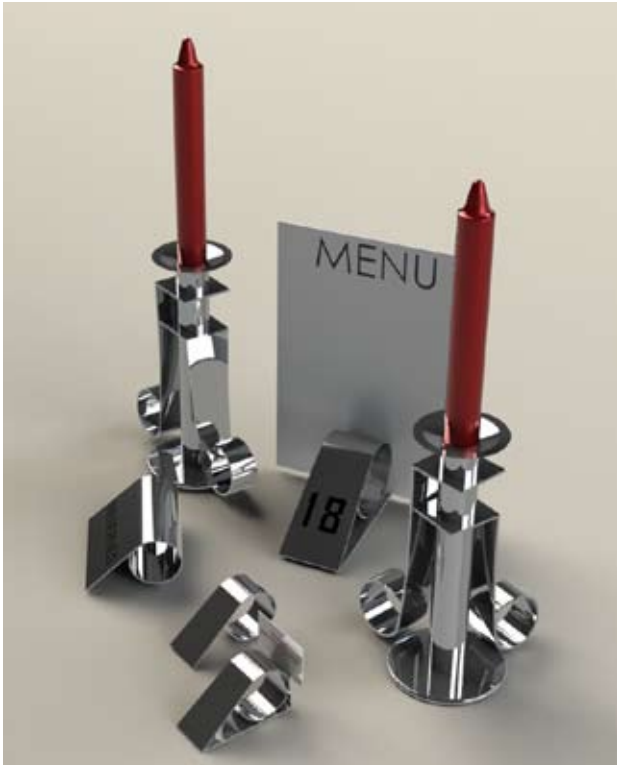
Placemat and napkin ring for the Society of Designer Craftsmen, Britain's oldest and largest multi-craft society, founded in 1887 by William Morris and Walter Crane. Made of pewter inlaid into American Walnut, they each incorporate the SDC's logo and are inspired by the excellence of craftsmanship which the Society represents



Both pieces designed by Shelby Fitzpatrick  
manufactured by Laura Carnell: RaRa Design

# OPEN COMPETITION

**Jim Stringer & Steve Anderson**  
[sales@chimoholdings.co.uk](mailto:sales@chimoholdings.co.uk)  
[www.chimoholdings.co.uk](http://www.chimoholdings.co.uk)



## MAKING WAVES

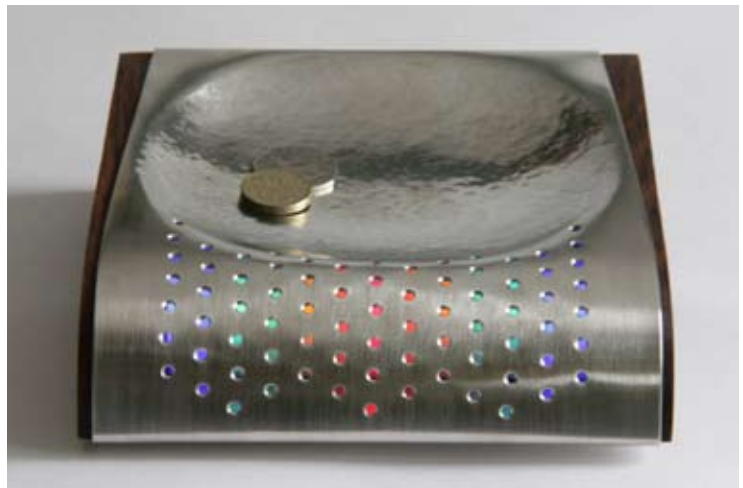
“Making Waves” is a contemporary and versatile range of pewter table accessories based on the shape of a wave that combines the ability to grace any table, be it in a restaurant or at home, with the possibility to be personalised with a (hotel) name or Company logo for special events.

*Jim Stringer and Steve Anderson work for Chimo Holdings*



## RESPONDER - Promotional object for counter

Pewter mounted on brown oak with branded logo. Gently bowled form, hammer textured and polished. Curved front edge punctured with holes to show intermittent lights, is brush finished. When coins are tossed onto the dish or music is playing, coloured lights flash in response.



**Melanie Guy**  
[melguy@onetel.com](mailto:melguy@onetel.com)  
[www.melanieguyart.com](http://www.melanieguyart.com)



# PEWTER LIVE 2009

**Julie Linn**  
[jandjlinn@hotmail.com](mailto:jandjlinn@hotmail.com)

## **SORBET DISH AND SPOON SET**

The skylines of Manhattan inspire this sorbet dish and spoon set. The simplicity of the dish means that it sits well in any contemporary setting and adds a memorable element to any dining experience.



**Trish Woods**  
[thwoods@blueyonder.co.uk](mailto:thwoods@blueyonder.co.uk)



## **“SPECTRUM” NAPKIN RINGS**

Napkin rings manufactured in coloured pewter reflecting nature’s hues of dusk and dawn. Cut, embossed and easily formed, they are simple to manufacture, utilising a unique one step colouring process. Client logos etc. could be engraved onto polished areas of the bands if required.

# OPEN COMPETITION

**Fleur Grenier**  
[design@fleurgrenier.co.uk](mailto:design@fleurgrenier.co.uk)  
[www.fleurgrenier.co.uk](http://www.fleurgrenier.co.uk)

## BLOSSOM CENTREPIECE AND CARDHOLDERS

Designed for hotels and special functions, the pewter and beads reflect the flame creating a dramatic effect in the middle of the table and the card holders link each place setting to the centrepiece. For a more corporate image the centrepiece could be soldered onto a pewter base or adhered to a slate or wood one that could be engraved/ carved with the hotel name or logo.



# PEWTER LIVE 2009

Gina Walters  
ginawalters34@hotmail.com



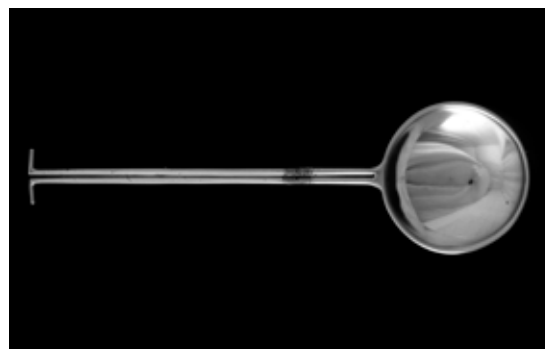
## 'KEY-HOLE' CADDY SPOON

The simplicity of the design makes reference to the historic status of Pewter, when established cast 'measures' were sanctioned for liquid and dry commodities. The Caddy Spoon is designed to carry a set measure of dry infusions, perhaps rare teas. The 'Key-Hole' profile echoed by the pierced motif in the handle introduces a formality, whilst referencing the more intimate tradition of the 'Love Spoon', adding focus and particularity to any restaurant table setting for two.



## UNCTUOUS LADLE

'Ladle' and 'to ladle' give this utensil a particular significance because its function is implicit in its name. To highlight form, function and the soft reflective qualities of Pewter, a suggested flow of viscous liquid is cast into the shallow bowl of the ladle. The raised meniscus disturbs the reflective symmetry of the bowl and introduces a natural pouring position at the rim, exemplifying the unctuous qualities of Pewter and its potential within Ceremonial functions.



## MACKINTOSH LADLE

A stylised hybrid of spoon and ladle in which the stretched parallel lines of the handle carry a detail at the 'fulcrum', instilling a reference to Pewterers' Casting Tongs. Initially style seems paramount and reminiscent of Early Modernism which lends a formal elegance to the encircled bowl and stem. However, the design retains its functional pragmatism.



## 'LAMB & LION' CHARGER

The 'Lamb & Lion' Charger acknowledges the tactile and narrative tradition of cast pewter and 'Wrigglework' as an artisan expression of contemporaneous concerns, dialogue and style. The Lions hold a formal heraldic and hierarchic status encircling the dominant image of the skittish Lamb. These contrasting agencies carry actual and metaphoric readings which traverse history, and would now sit comfortably as a corporate award or colloquial contemporary reference within the Inn, Bar and Hotel sector.



# OPEN COMPETITION

**Robert McEwan**  
clan\_designs@lycos.com



## **“BIG DOUGAL” WINE COOLER AND “SMALL DOUGAL” NAPKIN RINGS**

Both designs were inspired by the Pewter Live 2009 brief and in an abstract way by the character Dougal from my young daughter’s Magic Roundabout story book. Small and Big Dougal are made from a combination of highly polished spinnings which are simply soldered together. They are both surprisingly strong and lightweight in design.



**Simon Trimings**  
0781 867 2600

## **SUCCESS STARTS WITH A WISH**

This cast pewter piece is intended for use as a corporate award or for personal presentation and has flat areas suitable for engraving. The interlocking wishbone motif could be symbolic of success involving the achievements of personal or corporate “wishes” or “goals” The piece could be personalised.

# PEWTER LIVE 2009

**Jonathan Taylor**  
[strikingmetals@yahoo.co.uk](mailto:strikingmetals@yahoo.co.uk)



## **CORPORATE TABLE COASTERS**

My design is about demonstrating pewter in its most simple form, allowing the user to handle and visually understand its qualities.

The coaster can be sold on an individual basis or with the use of the modular carrier which clearly makes it both flexible and affordable.



**Yoyala Luikham**  
[lawrence\\_luikham@onetel.com](mailto:lawrence_luikham@onetel.com)

## **GEO LIGHT SCONCE**

A sculptural light sconce with a cuboid crystalline surface pattern. The jagged edges with their irregular gaps and chinks allow the light to radiate in a disruptive and uneven pattern highlighting its atmospheric ambience. Coloured lighting can be used to enhance the mood.

# OPEN COMPETITION

Chris Eckersley  
chris@chriseckersley.co.uk



## SALT & PEPPER

The idea for the shape of this pepper mill came from thinking about ease of holding, gripping, and turning.

The salt pot is simply a salt shaker, and the same casting can be used for both mill and shaker, with the addition of a top 'turn' for the mill. Cast in pewter and then highly polished (which would take the sharpness off the edges), these products would have a good feeling of weight and solidity, and therefore are aimed at the quality end of the restaurant market.

*Designed by Chris Eckersley,  
made by Wentworth Pewter.*

## STENCIL TABLE NUMBERS

The idea for these came from a set of workman's stencils I found in a hardware shop in France. However I modified the typeface to 'Baskerville' (which was designed here in Birmingham in the 1750s).

Expensive restaurants do not publicly number their tables, so this product is really aimed at up-market pub-restaurants, who might be looking for something more distinctive.





# PEWTER LIVE 2009

# UNIVERSITIES

Pewter Live could not be run without the colleges and universities which take part. Once again, our thanks go to the tutors and students for their support and the tremendous effort and enthusiasm which goes into the competition.

**Buckinghamshire Chilterns University College**  
[www.bcuc.ac.uk](http://www.bcuc.ac.uk) Tutor: Andreas Fabian

**Hastings College of Arts & Technology**  
[www.hastings.ac.uk](http://www.hastings.ac.uk) Tutor: Ashley Heminway

**Hereford College of Art and Design**  
[www.hereford-art-col.ac.uk](http://www.hereford-art-col.ac.uk) Tutors: Clive Hickinbottom and Anna Falcini

**Faculty of Art & Design - Manchester Metropolitan University**  
[www.mmu.ac.uk](http://www.mmu.ac.uk) Tutor: David Grimshaw

**South Devon College**  
[www.southdevon.ac.uk](http://www.southdevon.ac.uk) Tutor: Trish Woods

**Staffordshire University**  
[www.staffs.ac.uk](http://www.staffs.ac.uk) Tutor: John Grayson

**Truro College**  
[www.trurocollege.ac.uk](http://www.trurocollege.ac.uk) Tutors: Rose Karenza and Martin Page

**University College for the Creative Arts at Farnham**  
[www.ucreative.ac.uk](http://www.ucreative.ac.uk) Tutors: Rebecca Skeels and Linda Peterson

**University College for the Creative Arts at Rochester**  
[www.ucreative.ac.uk](http://www.ucreative.ac.uk) Tutor: Brian Hill

**University College Falmouth**  
[www.falmouth.ac.uk](http://www.falmouth.ac.uk) Tutor: Jason Cleverly

**London Metropolitan University**  
[www.londonmet.ac.uk](http://www.londonmet.ac.uk) Tutor: Beaulagh Chapman-Brooks

# STUDENT COMPETITION

## DECORATIVE ARTS

Within the category of Decorative Arts, Students are asked to design a pewter item for the gift market. The design can be either functional, fun or merely decorative with a price range of £5 to £60 pounds.

The judges are seeking not just originality and beauty but also innovation. We have encouraged the students to find out what people need/want at the moment. We want them to think about lifestyle trends. More and more people are entertaining at home they are looking for such items as: a wine chiller, a table centre piece or a modern take on the traditional vase.

We wanted the students to consider the visual benefits derived from the integration and use of colour to complement and enhance the pewter, using additional materials as appropriate - but we asked that the final item must be made predominantly of pewter.

**PRIZES: First £500 Second £350 Third £150**



**Elzbieta Banach - elabanach1@wp.pl**  
Buckinghamshire Chilterns University College  
BA(Hons) Silversmithing, Metalwork & Jewellery

### **DRINKING GLASS (PEWTER & GLASS)**

The design is inspired by looking at liquids and how they flow and react in different consistencies. The matt pewter surface and the polished edge comprise a quiet, elegant and balanced contrast. The beaker is meant to be used for cold drinks.

# PEWTER LIVE 2009



**Lisa Bate - [lili\\_loo83@yahoo.co.uk](mailto:lili_loo83@yahoo.co.uk)**  
University College Falmouth  
Contemporary Crafts BA(hons)

## BIONIC BEING

Investment cast pewter from free hand moulding wax, sandblasted glass, LED's.

This species is feeding off of our energy supply. They are evolving to survive in a world that is constantly changing and developing new technologies. Where they originally come from is yet to be discovered.



**Lucy Spencer - [lucy\\_lollipop03@hotmail.com](mailto:lucy_lollipop03@hotmail.com)**  
Buckinghamshire Chilterns University College  
BA(Hons) Silversmithing, Metalwork & Jewellery

## WINE ON TAP

“Wine on Tap” is a corkscrew and bottle stopper set based on traditional bathroom/ kitchen taps. Where traditionally the taps would say “hot” or “cold”, this space has been left blank for personalisation.



**Alexandra Tosto - [alexandratosto@yahoo.co.uk](mailto:alexandratosto@yahoo.co.uk)**  
London Metropolitan University  
FDA d Design Silversmithing ,  
Jewellery and Allied Crafts.2nd year

## DESKTIDIER

The Desktidier is a sculptural object in pewter to decorate and tidy up the desk. The design is reminiscent of structural forms and their growth process and it is intended to generate a smile, a thought process and a playful mood. It can be introduced to the market as a bespoke present and could be personalised for corporate gifts.



# STUDENT COMPETITION



**Bekky May - [bekky\\_may@yahoo.co.uk](mailto:bekky_may@yahoo.co.uk)**  
Hastings College of Arts & Technology  
FDA Contemporary Crafts Practice

## 'LAND FORMATIONS' (WALL PIECE)

It is my surrounding environment, the landscape of South East England, which influences 'Land Formations'. This wall piece is shaped by my experience of the fascinating and wildly varied geology found in this part of the world. Undertaking creative research of rock formations and fossils has further enhanced my understanding of the importance of conserving and respecting the natural world in which we live, and its seemingly infinite history.



**Mercedes Palfrey-Rogers-  
[mercedes2@onetel.com](mailto:mercedes2@onetel.com)**  
Hastings College of Arts & Technology  
FDA Contemporary Crafts Practice

## 'SPRINGTIME'

This is a marriage of porcelain and pewter, which is inspired by the fragility of the bud like flowers that emerge in Spring. This annual miracle of nature when the earth gives way to the flowers is represented by the seeming fragility of the delicate porcelain held within the pewter stems



**Jake Lazzari - [jakelazz@yahoo.co.uk](mailto:jakelazz@yahoo.co.uk)**  
Hereford College of Art and Design  
BA(Hons) Contemporary Applied Arts

## FIVE PILL BOXES

These contemporary pill boxes are primarily decorative but also functional and are inspired by lavish Italian bicycle components I encountered whilst working in the bicycle industry. The reflective qualities of pewter and its natural character is integral to these pill boxes as high quality items, ideal as a gift for a special occasion.

# PEWTER LIVE 2009



**Rachel Bessey-**

**rachelbessey@hotmail.com**

Hastings College of Arts & Technology  
FDA Contemporary Crafts Practice

## LOVE POEM BOOK

I have illustrated a love poem written by myself and made it in the form of a pewter and copper book.

The pages are illustrated by pressing sheet metal and hand cut lino in a hydraulic press and also a printing press. The words are typed and stamped and I have used patination to bring the work to life.

**Frankie Tong-**  
**frankii28@hotmail.com**

Faculty of Art & Design -  
Manchester Metropolitan University  
BA(Hons) Three Dimensional Design

## WOVEN VASE

A cylindrical vase standing just under 30 centimetres high uses weaving to give a decorative statement celebrating the properties of the material. The piece can be manufactured through simple fabrication processes (spinning, soldering, buffing) and also has potential for slush casting which would reduce the production costs.



# STUDENT COMPETITION

**Kay Wilks-** [kay.wilks@virgin.net](mailto:kay.wilks@virgin.net)  
Hastings College of Arts & Technology  
FDA Contemporary Crafts Practice



## LUCKY PEBBLE

To hold or display, will fit snugly into the palm of your hand. One side has the smoothness of a pebble picked from the beach, the other reflects the contours of the hand. They have the comforting feel of a pebble, and a walk by the sea, with the added interest of texture from a partial palm print.



**Ikko Katayama-** [ikkokat@yahoo.co.uk](mailto:ikkokat@yahoo.co.uk)  
Hastings College of Arts & Technology  
FDA Contemporary Crafts Practice

## LIGHT AND HOPE

Flexibility is one of pewter's charming characters and it works and interacts very well with many other materials. I love this aspect of it and appreciate the character and beauty the pewter brings to my glasswork. It adds a new dimension to my sculpture and I believe it conveys a piece of light and hope.



**Michaela Wetton-**  
[michaela\\_w26@hotmail.co.uk](mailto:michaela_w26@hotmail.co.uk)  
South Devon College  
FDA Integrated Crafts

## DECORATIVE GLASS PODS

My inspiration for these glass pods came from the form and colour of flowers. The pewter was sheet formed to create these three pods that hold the glass petals. Through the process of slumping and fusing, the glass adds vibrant colour and texture to these table centre pieces.



# PEWTER LIVE 2009



**Claire Tyzack-Stack -**

**marmalade7@yahoo.com**

London Metropolitan University

FDA Silversmithing Jewellery & Allied Crafts

## ARCHIVASE

Inspired by architecture I have taken the simple form of a brick to create a minimalist table piece. The porcelain vases rotate to lock into position. The versatile design could be scaled up or down from a table piece to a public seating area with fountains and planters. This piece lends itself to various finishing methods like etching stamping, high polishing, satinising, etc.

## PEWTER SOUNDS

Fun, functional and highly decorative computer speakers that make innovative use of pewter. Ideal for the designer home, modern workspace and business environment, the combination of pewter and perspex creates an attractive and original product for the commercial market.

Computers are essential in every day life and my design offers a fresh and positive contribution to one's personal environment.

**Andrew Bird- [bird0602@hotmail.co.uk](mailto:bird0602@hotmail.co.uk)**

University College for Creative Arts at Rochester

BA Goldsmithing, Silversmithing and Jewellery



# STUDENT COMPETITION



**Jewels Williams-**  
[jewelswilliams@tiscali.co.uk](mailto:jewelswilliams@tiscali.co.uk)  
Hereford College of Art and Design  
BA(Hons) Contemporary Applied Arts

## MOMENTS OF CHANGE

I have developed a group of vessels using pewter and porcelain to explore my ideas about "Moments of Change" and the impact that they have on individuals within families. Inspiration comes from the coastal divisions where the sea leaves impressions on the sand, changing the surface in subtle and sometimes dramatic ways.



**Laura Collins -**  
[lozmichelle01@hotmail.com](mailto:lozmichelle01@hotmail.com)  
Buckinghamshire Chilterns University College  
BA(Hons) Silversmithing, Metalwork & Jewellery

## 'TWO SILHOUETTED VASES' IN ONE

My design is based on the silhouette of two traditional vases but combining them into one. I wanted to make a vase that holds both small wild flowers such as Poppies and Bluebells, and some larger flowers as well. The water receptacle is a tall, heavy based shot glass, which is in full view as the two silhouetted vases take on their shape around it. I wanted to combine traditional with modern and minimalistic.

**Joy Prater-**  
[joyprater246@btinternet.com](mailto:joyprater246@btinternet.com)  
South Devon College  
FDA Integrated Crafts

## SET OF DRAUGHTS

Pieces of circuit board set in pewter; a draughts set made with circuit board and pewter playing pieces. 12 of the pieces with round circuit disks embedded into the pewter and 12 pieces in solid pewter, with the pattern etched on the top. The board is made with two tones of wood in the checkerboard pattern.



# PEWTER LIVE 2009



**Helen Edwards-**  
[helenedwardstextiles@yahoo.com](mailto:helenedwardstextiles@yahoo.com)  
South Devon College  
FDA Integrated Crafts

## LITTLE SQUARES TABLE MAT

Discarded pewter tankards were melted down and cast into little squares forming beautiful colours. These little squares are trapped between layers of chiffon and organza to form a heavy, subtly coloured mat with a stitched decorative edge detail.

**Helen Edwards-**  
[helenedwardstextiles@yahoo.com](mailto:helenedwardstextiles@yahoo.com)  
South Devon College  
FDA Integrated Crafts

## FRAMED PICTURE OF PEWTER SQUARES

It seems sad when commemorative pewter tankards are thrown away. Here they are given a new beauty by being melted down and cast together with other discarded fragments such as wine bottle foils, sea-weathered glass and wire. Each little square holds its own unique history and together they create a story.





# STUDENT COMPETITION

# ARCHITECTURE

## Architectural and Furniture - Fixtures & Fittings

Pewter offers students tremendous potential to design contemporary interior fixtures and fittings, from handles and hooks, shelves and brackets, to light fittings, lamp bases, and bathroom accessories. Today's homes adopt a variety of looks - minimalist urban-loft living, country-style cosiness, revivalist or traditional and most successful businesses have a corporate look which inspires confidence through its professionalism. Pewter fixtures and fittings can enhance them all.

We have asked the students to design a one-off item or a range of pieces which show originality and take into account today's trends in interior design. They must consider the possibility and practicality of large-scale production. This category offers students the chance to use pewter as a component within a larger design.

**PRIZES: First £500 Second £350 Third £150**



Alistair Pethick-  
steve@pethick.plus.com  
South Devon College  
FDA Integrated Crafts

### **CAST PEWTER TAP**

**which neatly folds away into a rectangular block when not in use**

Cast pewter tap, which neatly folds away into a rectangular block when not in use: Prototype cast pewter tap, which has been designed to be safe, stylish and compact. It works by pulling the top half of the block around. The temperature of the water will be shown by blue and red l.e.d bulbs.

# PEWTER LIVE 2009



Sophie Hopper-  
sophiehopper@hotmail.co.uk  
Hereford College of Art and Design  
BA(Hons) Contemporary Applied Arts

## OCTOBER

I have taken my inspiration from recording journeys to recreate the views and different aspects of a walk by capturing the elements and memories in a permanent record. Characteristics which particularly interest me include exploring the combination of realistic images, subtle textures and abstract graphic patterns influenced by the surrounding environment.

Jessica Bibbings-  
wainlode\_hill\_designs@hotmail.co.uk  
University College for Creative Arts at Rochester  
BA Goldsmithing, Silversmithing and Jewellery

## PEWTER CURTAIN POLE FINIALS

This design demonstrates innovative and exciting use of pewter as a decorative and bespoke interior fixture. My inspiration has come from the beautiful patterns and textures created by the Surma and Mursi tribes in Ethiopia. The pewter finial captures the fluid organic essence of their decoration and this aesthetic in my proposal is versatile to enhance any domestic setting.



# STUDENT COMPETITION



Molly Perrin-

[mperrin@hotmail.co.uk](mailto:mperrin@hotmail.co.uk)

University College for Creative Arts at Farnham  
3DD Metalwork and Jewellery

## PIPE HOOKS

An idea influenced by the similarities between networks of trees and pipes. They could stand alone, as a quirky feature, or be seen as an impressive forest of hooks. The holes are a statement about yourself or could contain trinkets, or be a practical solution for those who frequently lose keys.

Karen Fox-

[k.fox@blueyonder.co.uk](mailto:k.fox@blueyonder.co.uk)

London Metropolitan University  
FDA Silversmithing, Jewellery & Allied Crafts

## SCARY CROW GARDEN BOUNCERS

Scary Crow Garden Bouncers will add a sculptural element to the garden and scare the little birds away from the vegetable patch as they catch the wind, their highly polished forms reflecting the sunlight. They can be individually fixed onto steel rods or attached to a varnished wooden pole in a 'family group', adding architectural interest and movement to any garden, traditional or contemporary.



Joanne Tyler- [jotyler@waitrose.com](mailto:jotyler@waitrose.com)

South Devon College  
FDA Integrated Crafts

## 'I SPY WITH MY LITTLE EYE' - Pewter Letters

These letters can be attached to stakes and inserted anywhere in the garden. They can also be hung to tease the viewer into looking for words hidden around a tree trunk or high up in the branches. Internally they can be an amusing addition, i.e. attached to beams in a vaulted ceiling.





# PEWTER LIVE 2009



Jonathan Read-

[Jonathan.read@hotmail.com](mailto:Jonathan.read@hotmail.com)

University College for Creative Arts at Rochester  
BA Goldsmithing, Silversmithing and Jewellery

## APPARITION MIRROR

Inspired by the sweeping archways and curves of gothic architecture, the Apparition mirror serves as an exciting and alternative decorative installation for any home or contemporary setting.

The unique finish creates a new approach and use for pewter, providing a strong visual impact, and the interchangeable enamel disc offers additional enhancement.

## TRANSFORMATION

This striking and functional table fits comfortably in a contemporary home or business environment. Inspired by the Worshipful Company of Pewterers coat of arms and traditional furniture, pewter is placed in a position of prominence and decoratively enhances the table. The pewter is highlighted by the harmonious contrast of curving wood and the line of reflective glass.

Zoe Goodall-

[zgoodall@mail.com](mailto:zgoodall@mail.com)

University College for Creative Arts at Rochester  
BA Goldsmithing, Silversmithing and Jewellery



# STUDENT COMPETITION

## FASHION - FROM JEWELLERY TO THE TOTAL LOOK

Today's high street is awash with jewellery and accessories, few of which are made of pewter. Students are challenged to come up with designs which could promote pewter either as an accessory or part of the total look. Taking this into account, we asked them to design a piece, or range of jewellery which would appeal to young people to compliment today's free-form fashion. Students were encouraged to keep the commercial price relative to the intended buyer.

**PRIZES: First £500 Second £350 Third £150**



**Aiden Whitehouse-**  
[silverlobo10@yahoo.co.uk](mailto:silverlobo10@yahoo.co.uk)  
Staffordshire University  
BA(Hons) 3D Design: Crafts

### TWO MILITARY THEMED BADGES

Two badges based on old military medals made from pewter, copper and ribbon. Using simple iconography and a rugged working style I gave the badges the appearance of worn, antique military honours to be worn in a contemporary setting.



**Sadie Chesterman-Bailey-**  
[schestermanbailey@googlemail.com](mailto:schestermanbailey@googlemail.com)  
University College for Creative Arts at Farnham  
3DD Metalwork and Jewellery

### BOHEMIAN FLUTTER BROOCHES

I found myself inspired by the 'freedom of Bohemia' after researching and finding it is to be the theme for Fashion this year, 2009. The quirky frames are lost wax cast and are complimented by the fluttering butterflies delicately and thinly rolled from pewter with contrasting vintage lace pattern.

# PEWTER LIVE 2009



**Alexandra Twin-**  
[alexandra.twin@btinternet.com](mailto:alexandra.twin@btinternet.com)  
University College for Creative Arts at Farnham  
3DD Metalwork and Jewellery

## ASYMMETRIC PEWTER PENDANT CHAIN WITH PEWTER GEMSTONES

I was inspired by the summer catwalk trends for Victorian lacework and asymmetry. The cast pewter gemstones make the piece appear more valuable and reflect the light beautifully when worn. My necklace is 100% pewter and shows the versatility of the metal.



**Michaela Wetton-**  
[michaela\\_w26@hotmail.co.uk](mailto:michaela_w26@hotmail.co.uk)  
South Devon College  
FDA Integrated Crafts



## REFLECTIVE NECKLACE AND EARRINGS

Using a steel stamp to create these duplicated petal shapes I experimented with how wire could be integrated with pewter. The petal shapes have been soldered into pairs and attached together using silver links that make up a necklace and earring set that glistens as it catches the light.



# STUDENT COMPETITION



**Alice McLean-**  
[alicemclean@hotmail.com](mailto:alicemclean@hotmail.com)  
University College Falmouth  
BA(hons) Contemporary Crafts

## **‘RAINY, CHANGE, FAIR’ Brooch, made from wood, pewter and silver.**

Everyday we embark on journeys; from the mundane to the extraordinary. This brooch has been inspired by a collaboration of journeys, physical, meteorological and temporal, to create a piece which is at once both traditional in composition but contemporary in design.



**Rochine Metcalfe-**  
[rochinemetcalfe@googlemail.com](mailto:rochinemetcalfe@googlemail.com)  
Faculty of Art & Design -  
Manchester Metropolitan University  
BA (Hons) Three Dimensional Design

Drinking culture has changed. Alcohol is no longer valued as a precious commodity to be treasured, decanted and ornamented. Instead, it is enjoyed instantly. I have adapted the traditional bottle tag making it wearable, decorating the person rather than the disused decanter, reusing a traditional product to produce something contemporary.



**Elizabeth Oneal-**  
[lizzyhonour@yahoo.com](mailto:lizzyhonour@yahoo.com)  
London Metropolitan University  
FDA Silversmithing, Jewellery & Allied Crafts

## **HOODWINKED**

‘Hoodwinked’ is a dual function fashion accessory and jewellery design piece. This glamorous chunky neck piece is constructed from pewter, using pressing and hammering techniques. It will contain a hidden internal pocket which will hold a concealed light and a sheer and woven silky hood. Targeted market sector is aimed at high street fashion stores with a wide age range of consumers who enjoy dressing up for parties and club life. Inspiration came from looking at city lifestyle especially hip hop fashion and element that represent and transcend many cultures

# PEWTER LIVE 2009



**Helen Edwards-**  
[helenedwardstextiles@yahoo.com](mailto:helenedwardstextiles@yahoo.com)  
South Devon College  
FDA Integrated Crafts

## BRACELET OF CIRCLES

The circles were punched from rolled sheet pewter and each given an individual repoussé pattern. The circles were then stitched together using a fine nylon filament thread to form an armband style bracelet.



**Ewelina Mruk-**  
[mt423369@student.staffs.ac.uk](mailto:mt423369@student.staffs.ac.uk)  
Staffordshire University  
BA(Hons) 3D Design: Crafts

## PEWTER BROOCH AND HAIR SLIDE

This jewellery set is a combination of pewter and glass beads. Inspiration is based on pea pods in different stages of their life. Using intensive green colours contrasting with the shiny, cold colour of pewter to echo the freshness of the subject matter. Designed for special occasions and everyday wear.



**Georgina Maria Zupnick-**  
[alexandra.twin@btinternet.com](mailto:alexandra.twin@btinternet.com)  
University College for Creative Arts at Farnham  
3DD Metalwork and Jewellery

## KNOT OF ISIS SHAWL RING

The thet knot was used as a symbol for the Egyptian goddess Isis and was also a type of knot used to tie the front of garments in the classical era. The fine detail of this piece was achieved by creating a mould from twisted pewter and fabric shape.

# STUDENT COMPETITION



**Lucy Alexandra Howard-**  
**luce\_46@hotmail.com**  
University College for  
Creative Arts at Farnham  
3DD Metalwork and Jewellery

## STATEMENT NECKLACE:

Oversized links filled with resin attached to silk cord.  
T bar clasp (pewter).

I have created a statement necklace that creates the outfit, instead of just being an accessory to clothing. Made from oversized pewter links filled with bright red resin, which gives a flash of colour. The pewter is highly textured and polished, which gives a reflective faceted appearance.



**Joy Prater-**  
**joyprater246@btinternet.com**  
South Devon College  
FDA Integrated Crafts



**Joy Prater-**  
**joyprater246@btinternet.com**  
South Devon College  
FDA Integrated Crafts

## Belt with Coral Shaped Buckle

Leather belt that fits around the waist.  
The buckle is cast in pewter, the design taken directly from the centre of sea coral.

## Corsage in two halves with matching belt

These coral inspired shapes link together to create a set of two brooches, to be worn singularly or as a pair. There is also a leather hip belt with the same pewter shape to match the brooch.



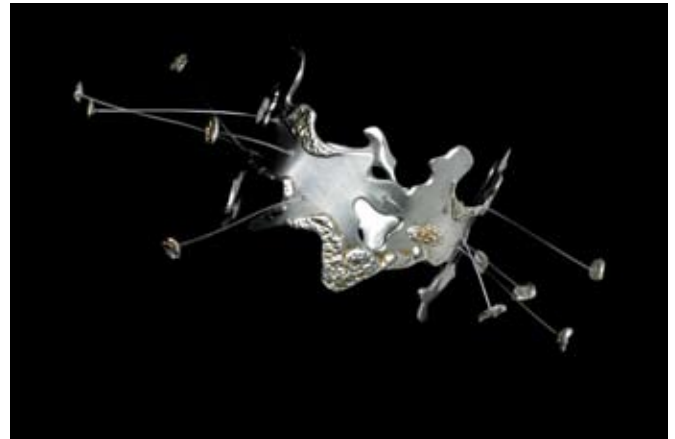
# PEWTER LIVE 2009



**Helen Edwards-**  
[helenedwardstextiles@yahoo.com](mailto:helenedwardstextiles@yahoo.com)  
South Devon College  
FDA Integrated Crafts

## ACORN CUP NECKLACE

This necklace is suitable for male or female wear. Each acorn cup is individually cast, ensuring that every one is unique. The lime green nylon thread provides a contemporary contrast to the pewter colour.



**Jo Bradford-**  
[joxbradford@hotmail.com](mailto:joxbradford@hotmail.com)  
South Devon College  
FDA Integrated Crafts

## RETICULATED BANGLE

This is a fun piece, its inspiration derived from a not so fun personal experience and a fascination with the reticulation of pewter when heated. The bracelet shape was taken from the study of alveoli. The tiny floating pewter pieces relate directly to blood clots travelling around the lungs.



**Jo Bradford-**  
[joxbradford@hotmail.com](mailto:joxbradford@hotmail.com)  
South Devon College  
FDA Integrated Crafts

## PEWTER AND SHATTERED WINDSCREEN GLASS NECKPIECE

My interest lies in the transformation of discarded materials. I have recycled pewter tankards and shattered windscreen glass into jewels to form a pendant supported by silver wire. Exploiting traditional ideas of the hierarchy and preciousness of materials and in turn providing a delicious twist in the narrative of the piece.

# STUDENT COMPETITION



**Rachael Spragg-**  
**rachaelSpragg2002@yahoo.com**  
Staffordshire University  
BA(Hons) 3D Design: Crafts

## “SPINE BACK PIECE” Body Adornment

This piece of body adornment is based on the human spine. I wanted to bring the inside out, so the necklace should be worn down the back where the spine is. It is made of formed sheet pewter and riveted together with aluminium rivets.



**Vanessa Fielder-**  
**vanessajanefielder@hotmail.com**  
Truro College  
FDA Silversmithing & Jewellery

## PRESS FORMED NECKLACE 1

This item was inspired by the shape of part of a heart. The texture is made by using copper wire through the rolling mill. The necklace is made up of hearts chasing hearts. The centre represents a broken heart. The techniques used are press forming and soldering.



**Vanessa Fielder-**  
**vanessajanefielder@hotmail.com**  
Truro College  
FDA Silversmithing & Jewellery

## PRESS FORMED NECKLACE 2

The pewter necklace was inspired by pebbles on the beach, made in three different sizes. The texture used was lace, coarse sand and paper to give each pewter pebble its own unique texture. I chose press forming as my technique as it was a less time consuming process. Pewter is fantastic to solder and a lovely metal to work with.

# PEWTER LIVE 2009



**Juliette Cheek- [juliette.cheek@mail.com](mailto:juliette.cheek@mail.com)**  
University College for Creative Arts at Rochester  
BA Goldsmithing, Silversmithing and Jewellery



**Kaley Andrews-  
garnedd2@btinternet.com**  
Staffordshire University  
BA(Hons) 3D Design: Crafts

## **ITTA JEWELLERY:**

### **Pewter bead necklace.**

A design for pewter beads derived from inspiration taken from tribal Nepalese jewellery and the rock chic trend, that creates a vibrant combination for a high fashion look. The beads can be used with alternative materials to achieve a multitude of colour schemes as a necklace, bracelet or armband making this versatile jewellery both ethnic and edgy.

## **DAISY CHAIN:**

### **A contemporary necklace design**

I have designed a necklace with a modern and unique twist, inspired loosely by the development and growth of a flower. The growing stages of the flower are represented in the enlarging, unconventional twisted and contorted links of the necklace that flow to reveal the open flower in the centre.



**Samantha Dowell-  
sjbutterflies@hotmail.com**  
South Devon College  
FDA Integrated Crafts

## **ART NOUVEAU INSPIRED BUTTONS**

I have drawn my inspiration for my entire second year from the Art Nouveau movement. I wanted to capture an individual arts and crafts feel to my work and these simple yet effective buttons finish off a garment perfectly. The original design was carved into a cuttle fish, from which a cast was taken before being turned into a mould.



# STUDENT COMPETITION

**Kevin Brooks- Kbrook1234@aol.com**  
University College for Creative Arts at Rochester  
BA Goldsmithing, Silversmithing and Jewellery

## FASHION CONSCIOUS CONTEMPORARY WRISTWEAR

A collection of attractive unisex bracelets that exploit and promote the use of pewter and modern materials. All designs feature an ingenious combination of striking pewter units that are suspended and protected by the vibrant use and effect of perspex. My design has been developed for the production and commercial market, offering endless varieties of pewter patterns and combinations for the fashion conscious younger generation.



**Julia Smith-**  
**juliagracesmith@hotmail.co.uk**  
Hereford College of Art and Design  
BA(Hons) Contemporary Applied Arts

## VINTAGE INSPIRED CONTEMPORARY KEEPSAKES X3

The designs for my jewellery have developed from my collection of vintage tins. My intention was to create pieces that could contain something important to the wearer. I have added decoration and detail by using the lettering from the tins etched into the pewter.



**Romayne Curzon-**  
**davro.curzon@virgin.net**  
Hereford College of Art and Design  
BA(Hons) Contemporary Applied Arts

## TURNING HEADS

From my interest in seeds and their patterns of dispersal, I have developed a collection of fascinators and corsages. The pieces encompass both functional and sculptural qualities and are intended as either personal adornment or as mementos which celebrate significant events.

# PEWTER LIVE 2009



**Lauren Drew-**  
**Silverlobo10@hotmail.com**  
Staffordshire University  
BA(Hons) 3D Design: Crafts



**Matthew Sayers-**  
**matthewsayers@live.co.uk**  
Hereford College of Art and Design  
BA(Hons) Contemporary Applied Arts

## LILY BANGLES

Formed strips of Perspex decorated with pewter flower forms create a range of bangle shapes. The pewter parts were rolled to create texture and then pierced into the flower shapes. The orange and white colours are taken directly from the images of lilies.

## COMMEMORATIVE BROOCH

My contemporary jewellery is inspired by some of the major conflicts within the 20th century, as well as my family's involvement and loss. This pewter piece is in memory of my great uncle who lost his life during he Second World war aboard HMS Gloucester, along with all the other lives lost during that day.



**Heather Richardson-**  
**hetttyrichardson@btinternet.com**  
Staffordshire University  
BA(Hons) 3D Design: Crafts

## ULTRA VIOLET SENSITIVE NECKPIECE MADE FROM ACRYLIC AND PEWTER

I wanted to create a striking neckpiece to represent modern youth culture and clubbing styles. I took inspiration from crop circles, to produce a vibrant and rather different form. This piece will glow under ultra violet light allowing the pewter to create an interesting contrast to the Perspex.

# STUDENT COMPETITION

**Teela Sian Newton-**

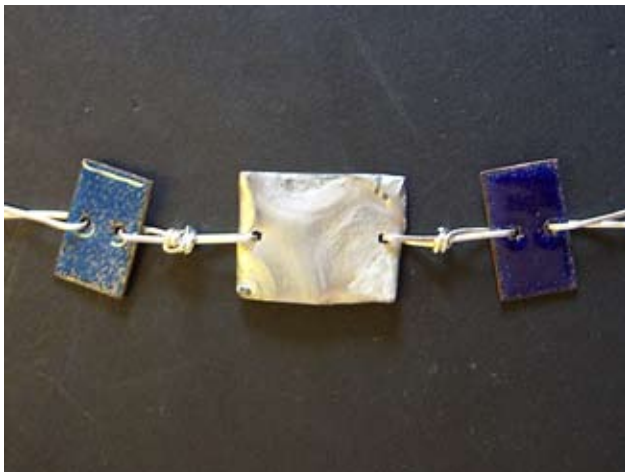
**[teela\\_designs@hotmail.co.uk](mailto:teela_designs@hotmail.co.uk)**

University College for Creative Arts at Farnham  
3DD Metalwork and Jewellery



## BRACELET INSPIRED BY AZTEC ZIGGURATS AND DECO STATEMENT JEWELLERY

Bracelet inspired by Art Deco and statement jewellery. The shape is inspired by the geometric steps of Aztec ziggurats and the rich emerald colours are used to emulate the stone encrusted jewellery of the 1930s. Cast and textured using inlays of resin as a modern representation of stone.



**Jemma Jordan-** [opm197@talktalk.net](mailto:opm197@talktalk.net)

Hastings College of Arts & Technology  
FDA Contemporary Crafts Practice

## PEWTER AND ENAMELLED COPPER NECKLACE

This piece was inspired by the 'Photomosaic' pictures constructed once a spacecraft has completed its approach around a planet, giving a patchwork view of its surface. The texture on this pewter necklace was achieved by gently heating the surface of sheet pewter, then delicately agitating the piece until cool.



**Jeny Sugg-**

**[jenmattarwen@hotmail.com](mailto:jenmattarwen@hotmail.com)**

Hastings College of Arts & Technology  
FDA Contemporary Crafts Practice

## PEWTER BANGLES/RING ENCASED WITHIN BIORESIN

Through Jeny's exploration of Pewter she has discovered a way of producing a variety of colours through oxidation that creates an organic and natural look to the material. Using this as the base for her ideas she has used Bioresin to encase the various forms she produces and creates an array of unusual and exciting jewellery.



# PEWTER LIVE 2009

## Association of

The resurgence in trade can in the main be attributed to the formation in 1970 of the Association of British Pewter Craftsmen (ABPC).

The initiative was taken by a group of manufacturers, the metal suppliers and The Worshipful Company of Pewterers. By promoting high standards, raising awareness of pewter and encouraging innovation and excellence in manufacturing, the ABPC has achieved impressive results and together with the Pewterers' Company has helped to establish British pewter firmly in both domestic and international markets.

enquiries@abpcltd.co.uk    www.britishpewter.com

### Your Guide to British Pewter

#### What is Pewter?

Pewter is mainly Tin alloyed with other metals added to allow the material to be worked and formed. The Tin content will vary but is generally higher than 91.5%. Pewter was introduced to Britain by the Romans and has been used to produce objects both useful and desirable ever since. Today's British pewter industry is a dynamic and traditional one combining fine design and ancient skills to produce objects to be treasured and enjoyed.

#### How do I know its British Pewter

Only British pewter is allowed to carry the marks illustrated below, these are found stamped into each piece individually or as part of a collection of marks known as the "touchmark".

#### The symbols to look out for are:



The ABPC mark, which stands for the Association of British Pewter Craftsmen whose members, must make their objects to quality standards of craftsmanship and alloy composition.



The Seahorse mark is only allowed for use by ABPC members on their finest wares, the emblem comes from the coat of arms of the Worshipful Company of Pewterers in the City of London who have been permitted to police the industry since receiving a royal charter in 1474.



The EPU mark of the European Pewter Union, the composition of pewter conforms to BS EN611 parts 1 and 2 and the number in the centre is registered to a particular factory or firm, all UK numbers begin with a 3.

Association of British Pewter Craftsmen  
Unit 10, 1st Floor, Edmund Road, Sheffield, S2 4ED.  
Telephone: 0114 2527550

A. E. Williams Ltd - sales@pewtergiftware.com

A .R. Wentworth (Sheffield) Ltd -  
sales@wentworth-pewter.com

Alchemy Carta Ltd - info@alchemygroup.com

Ancestors of Dover Ltd - nick@ancestors.co.uk

Benchmark Woodworking Ltd -  
s.sutcliffe@benchmarkwoodworking.com

Blyde Edwin & Co. Ltd - pewter@edwinblyde

page 49 PEWTER LIVE

Cool Blue Ltd - kyriacouli@aol.ccom

Chimo Holdings - chimo@btclick.com

DJH Engineering Ltd - sales@djhpeewterworks.co.uk

Fleur Grenier - www.fleurgrenier.co.uk

Glover & Smith - sales@gloverandsmith.com

Keith Tyssen DesRCA - keithtyssen@blueyonder.co.uk

Harkinson Jewellery Ltd -  
Doreen@pewtermill.fs.business.co.uk

Lionheart Replicas - lionheartreplicas@tinyworld.co.uk

Park Metal Construction - alan@parkmetals.fsnet.co.uk

Peter Wheeler - peter@pwheeler.com

Pinder Brothers Ltd - dap@pinder.co.uk

St Justin Cornwall Ltd - sales@st.justin.co.uk

Tom Neal Pewter - Tel: 01235 224 226

Welsh Pewter - gareth@peregrinepewter.co.uk

Zinc Counters Ltd - sales@zinccounters.co.uk

**For more details of members and Associate members of the APBC go to our manufacturers gallery:**

*www.pewterers.org.uk -  
manufacturers gallery*

**Or directly to the ABPCs website:**  
*www.britishpewter.co.uk*

# ABPC British Pewter Craftsmen

## Showcase



Example of pewter jug produced by  
A E Williams for Hampton Court Palace  
[www.pewtergiftware.com](http://www.pewtergiftware.com)



Miranda Watkins for A R Wentworth  
Gleam pewter tableware collection  
which won the  
Eureka Design Award 2008  
[www.mirandawatkins.com](http://www.mirandawatkins.com)



Above: Ian McIntyre's Slush Cast Bowls  
which were presented by Prime  
Minister Gordon Brown to world  
leaders at the G20 summit

Left: The Stunning bar made by  
Benchmark for the Royal Exchange.  
[www.benchmarkfurniture.com](http://www.benchmarkfurniture.com)

# PEWTER LIVE 2009

## Pewter Live 2008 - Last year's winners and highlights

The diversity and range displayed in the pewter that was produced for Pewter Live 2008 was truly inspiring. Over 80 students from 12 different colleges and universities took part in the Student Design Competition with ten designers competing in the Open Design Competition.



From left: Katy Holford, Conleth Moran, Jane Murtagh, VIP Guest Deyan Sudjic, Ema Fox and Chairman of the Judges Sebastian Conran, Front: Bianca Wooler.

### Open Competition

#### FIRST PLACE

Katy Holford - 'Winter Flowers'



#### SECOND PLACE

Laura Carnell - 'Sculptural Timepiece'



#### THIRD PRIZE

Tim Parsons - 'Picnic Set'

#### Commended:

Susan Bradley - 'Garden Jewellery' & Sian Jones 'Away with the Wind'



# PAST WINNERS

## Student Competition

### DECORATIVE ARTS

**First Place:** Bianca Wooler- 'Let it Snow', Snowflake Christmas Tree Decoration  
Buckinghamshire Chilterns University College

**Second Place:** Jenny Bland - Pewter and Walnut Fruit Dish  
Manchester Metropolitan University

**Third Place:** Inga Winson - Spoon Sculpture  
Hereford College of Art and Design

**Commended:** Clare Knox-Bentham - Drip Candlestick  
Manchester Metropolitan University

**Commended:** Lindore McClarty - Pewter Plants  
Manchester Metropolitan University

**Commended:** Emma Mogridge - Balloon Centre Piece  
Birmingham City University



**Right: First Place:** Bianca Wooler - 'Let it Snow',  
Snowflake Christmas Tree Decoration

### ARCHITECTURE

**First Place:** Conleth Moran, London Metropolitan University - Pewter Poste

**Second Place:** Rachel Newham, University College Falmouth - Lever Action Pillar Pump

**Third Place:** James Dougall, Buckinghamshire Chilterns University College - Ghost Table Lamp

**Commended:** Amieé Craddock, Truro College - Amour Lightshade

**Commended:** Zoë-Elissa George, Truro College - Decorative Drain Hole

### FASHION - JEWELLERY AND ACCESSORIES

**First Place:** Ema Fox, Truro College - Articulated Bracelet

**Second Place:** Caroline Linnecar, Staffordshire University - Decorative Pewter Belt

**Third Place:** Fiona McAlear, Manchester Metropolitan - Neckpiece

**Commended:** Kimberly May Piggott, University College for Creative Arts Farnham -  
Suit Pocket Decoration

**Commended:** Sian Bostwick, University College for Creative Arts Rochester - Necklace and  
Bracelet

### FASHION - THE TOTAL LOOK

**First Place:** Jane Murtagh, University College for Creative Arts Rochester - A Unisex Waisty

**Second Place:** Beth Ashton Lewis, South Devon College - BLING -Kerz! Fashionable Spectacles

**Third Place:** Jayne Turnbull, London Metropolitan University - Over-Underwear

**Commended:** Kirsty Alman, University College for the Creative Arts at Farnham - 'Embellish  
Me' - Embossed Pewter and Embroidered Smock Top

# PEWTER LIVE 2009

## Statement of Design Rights

The works shown in the exhibition and in this catalogue are required by the Worshipful Company of Pewterers to be original works, but the Company does not make any warrantee in this regard.

**Unregistered Rights.** All the works shown in this catalogue and exhibited at Pewter Live 2009 at Pewterers' Hall, London EC2V 7DE on 9th June 2009 may be protected automatically by Unregistered Design Right for 10 years in the UK as provided by the Copyright, Designs and Patents Act 1988 and for 3 years in Europe as provided by EC Council Regulation No. 6/2002 on Community Designs, subject to fulfilment of the requirements for qualification for UK Design Right protection and/or EU Unregistered Design protection. Unregistered Design rights protect only against copying by a third party.

**Registered Rights.** EC Council Regulation No. 6/2002 also provides that an application for EU Registered Design may be submitted for any of these designs so exhibited that fulfil the requirements for EU Registered Design protection within 12 months of the date of first exhibition of the design, as long as the exhibition was the first disclosure of the design otherwise than in confidence. The application would receive the filing date of the actual date of submission of the application but the exhibition disclosure will not be taken into account for the purpose of assessing qualification for Registered Design protection. Registered Design protection is also available in the UK only.

**Further Details.** Advice regarding asserting Unregistered Design Rights and the procedure involved in applying for the Registered Design Rights can be obtained at no charge by the authors of the designs (or with their written permission) by application to The Clerk, The Worshipful Company of Pewterers, Pewterers Hall, Oat Lane, London EC2V 7DE by post or email to [clerk@pewterers.org.uk](mailto:clerk@pewterers.org.uk) . These details are kindly provided by Kilburn & Strode, 20 Red Lion Street, London WC1R 4PJ.  
Copyright A Rurhmann 2008